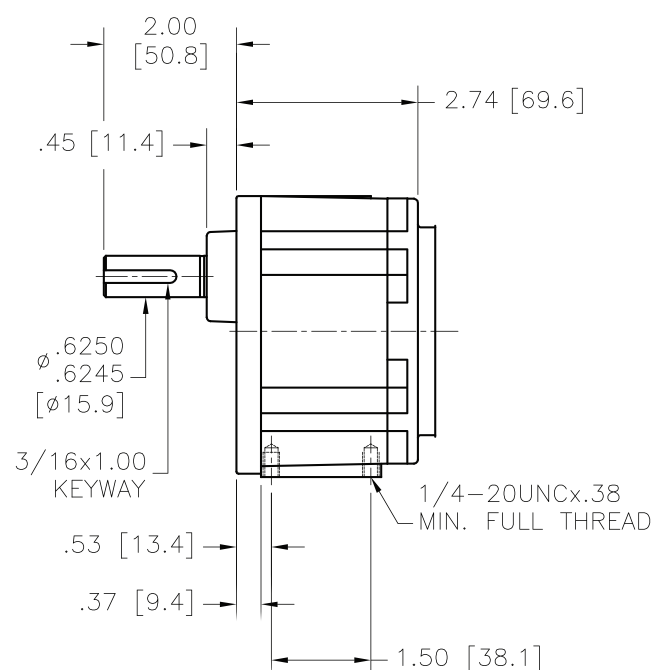
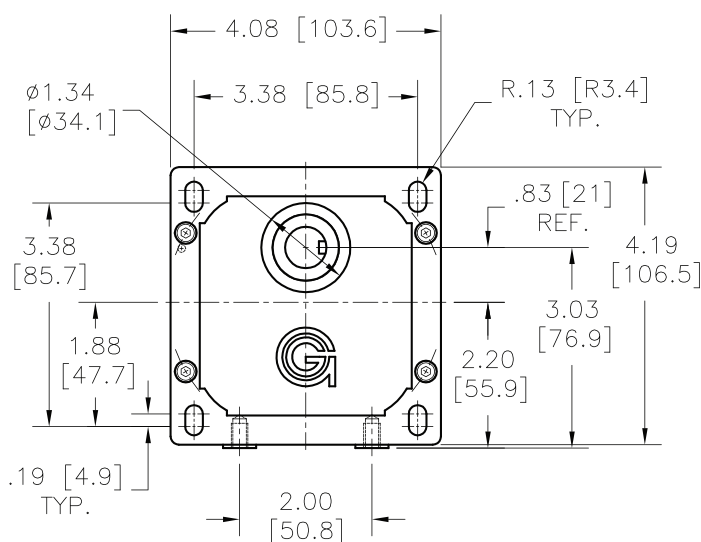


frame size 21

PARALLEL SHAFT

As the middle frame size of parallel shafts manufactured by Groschopp, the PS2105-PS21120 line of reducers have an input speed of 1800 RPM, but have continuous torque ranging from 25 to 225 lb-in and yield torque from 150 to 1200 lb-in.



Reducer	Input Speed* (RPM)	Ratio	Continuous Torque (lb-in)	Yield Torque (lb-in)
PS2105	1800	5:1	25	150
PS2110	1800	10:1	50	300
PS2115	1800	15:1	75	450
PS2120	1800	20:1	100	600
PS2130	1800	30:1	140	800
PS2140	1800	40:1	150	1200
PS2160	1800	60:1	225	1200
PS2190	1800	90:1	225	1200
PS21120	1800	120:1	225	1200

*Input speeds based on Groschopp's life tests, other speeds available

All dimensions are nominal
Measurements in inches [mm]

Groschopp's standard parallel shaft gearboxes use oil, but a variety of grease options are available upon request.