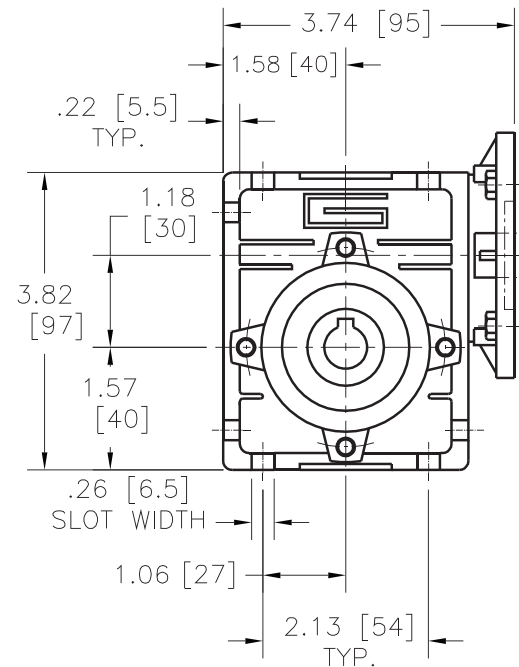
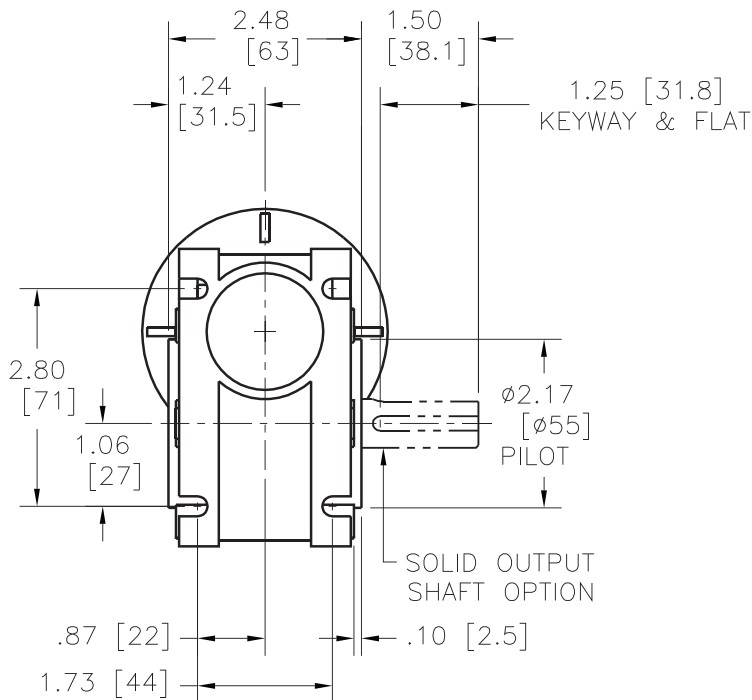


frame size 30

RIGHT ANGLE

A dozen reducers make up Groschopp's frame size 30 right angle line. These twelve reducers have ratios spanning from 5:1 to 100:1. In addition, continuous torque (lb-in) ranges from 48 to 152, with yield torque also reaching from 800-1098 lb-in.



Reducer	Input Speed* (RPM)	Ratio	Continuous Torque (lb-in)	Yield Torque (lb-in)
RA3005	1800	5:1	48	926
RA3007	1800	7.5:1	94	926
RA3010	1800	10:1	96	926
RA3015	1800	15:1	122	926
RA3020	1800	20:1	125	926
RA3025	1800	25:1	101	1062
RA3030	1800	30:1	93	1098
RA3040	1800	40:1	141	1062
RA3050	1800	50:1	122	832
RA3060	1800	60:1	123	832
RA3080	1800	80:1	147	832
RA30100	1800	100:1	152	800

*Input speeds based on Groschopp's life tests, other speeds available

All dimensions are nominal
Measurements in inches [mm]

Shaft kits, torque arms, output flanges, input flanges and dust covers are available upon request for Groschopp's Right Angle gearboxes.