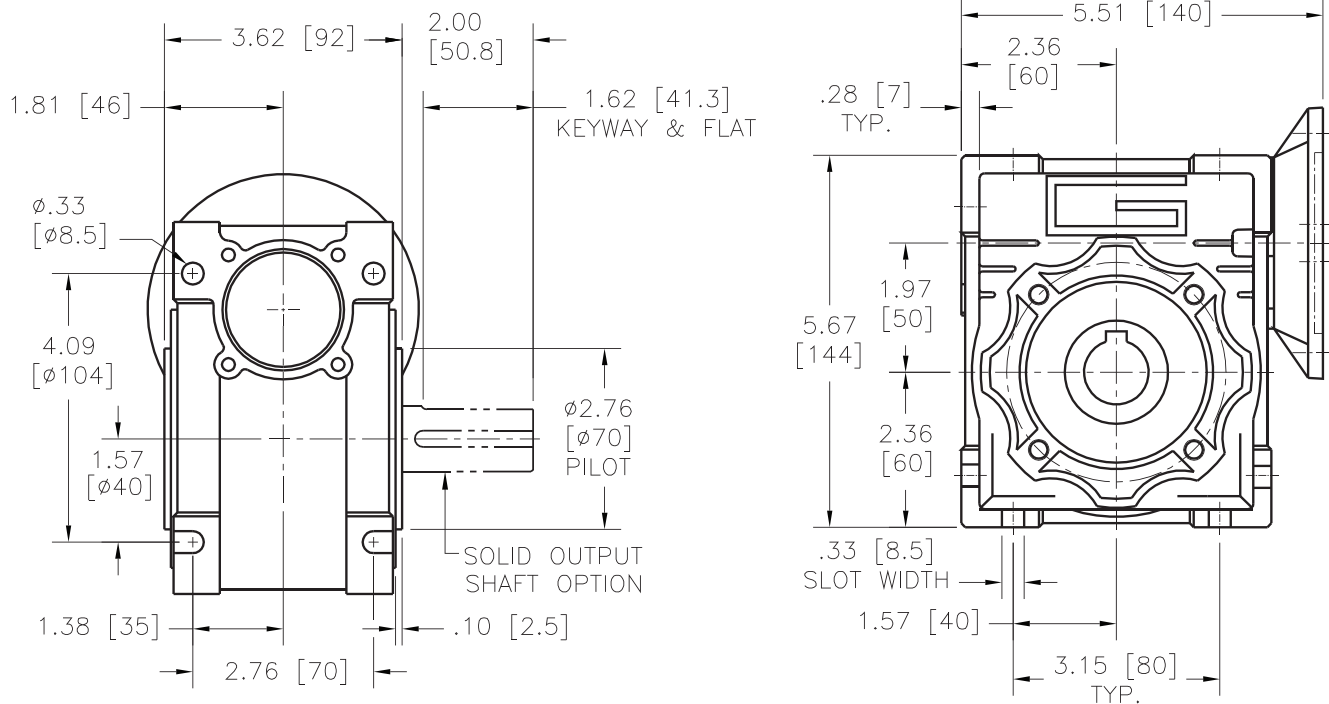


# frame size 50

## RIGHT ANGLE

Eleven reducer options make up Groschopp's largest right angle size, which is frame size 50. Based on life tests with input speeds of 1800 RPM, these reducers range in ratios from 7.5:1 to 100:1. Yield torque ranges from 1283 lb-in to 3982 lb-in.



Reducer	Input Speed* (RPM)	Ratio	Continuous Torque (lb-in)	Yield Torque (lb-in)
RA5007	1800	7.5:1	76	3982
RA5010	1800	10:1	91	3982
RA5015	1800	15:1	184	3982
RA5020	1800	20:1	229	3982
RA5025	1800	25:1	239	3717
RA5030	1800	30:1	180	3982
RA5040	1800	40:1	146	3982
RA5050	1800	50:1	198	3717
RA5060	1800	60:1	73	2832
RA5080	1800	80:1	143	1814
RA50100	1800	100:1	352	1283

\*Input speeds based on Groschopp's life tests, other speeds available

All dimensions are nominal  
Measurements in inches [mm]

Shaft kits, torque arms,  
output flanges, input flanges  
and dust covers are  
available upon request for  
Groschopp's Right Angle  
gearboxes.